

# MONTHLY MEMBERSHIP PROGRESS REPORT

District 3234H2

Results as of: 6/30/2020

GMT:

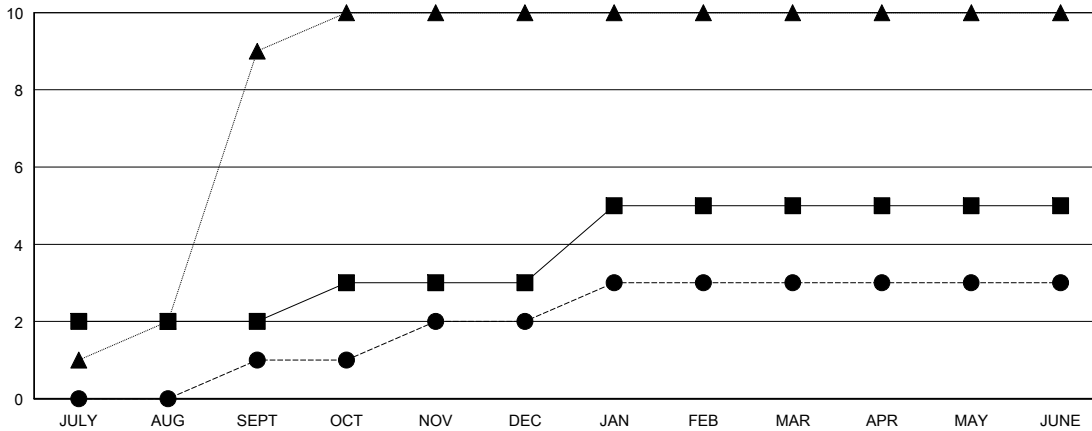
LOCATION INDIA

GMT CA

Clubs			
RESULTS FOR 2019-2020			
QUARTER	NEW CLUB GOAL	NEW CLUBS	DROPPED CLUBS
JULY/AUG/SEPT	2	1	0
OCT/NOV/DEC	1	1	6
JAN/FEB/MAR	2	1	0
APR/MAY/JUNE	0	0	0

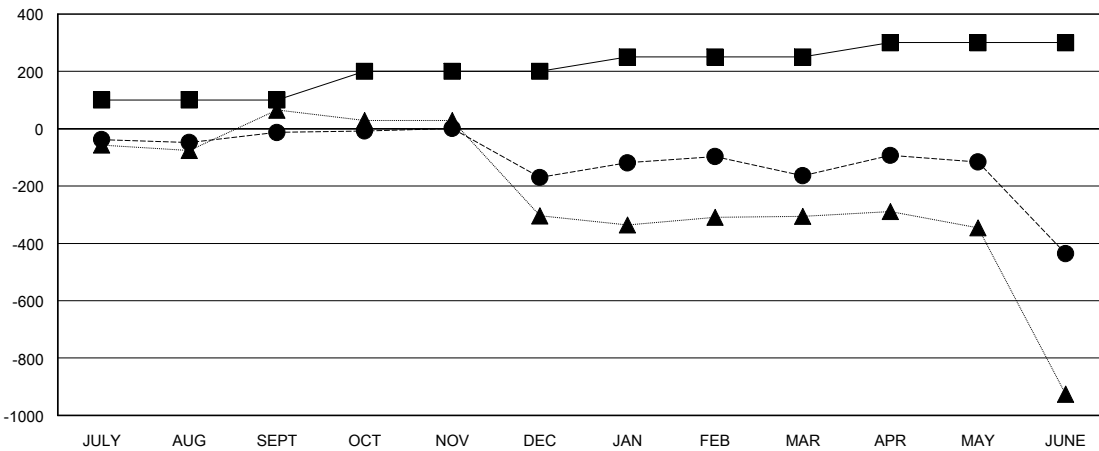
Members			
RESULTS FOR 2019-2020			
QUARTER	MEMBER GROWTH NET GOAL	MEMBER GROWTH ACTUAL	DROPPED MEMBERS ACTUAL (including transfers)
JULY/AUG/SEPT	100	93	77
OCT/NOV/DEC	100	98	248
JAN/FEB/MAR	50	180	96
APR/MAY/JUNE	50	139	390

GOALS AND ACTUAL NEW CLUBS CUMULATIVE



- - CURRENT YEAR GOALS FOR NEW CLUBS
- - CURRENT YEAR ACTUAL NEW CLUBS
- ▲ - LAST YEAR ACTUAL NEW CLUBS

GOALS AND ACTUAL MEMBERS CUMULATIVE



- - MEMBER GROWTH NET GOAL
- - MEMBER GROWTH ACTUAL
- ▲ - LAST YEAR MEMBERSHIP ACTUAL

DROPPED CLUBS: 6	55 CLUBS OF 83 ADDED 1 OR MORE NEW MEMBERS	<b>GENDER DISTRIBUTION</b> MALE 2,376 (78.88%) FEMALE 636 (21.12%)
<b>DROPPED MEMBERS</b> DECEASED 5 CLUB CANCELLED 93 OTHER 713 TOTAL 811	<a href="#">CLICK HERE FOR CUMULATIVE MEMBERSHIP DATA</a>	TOTAL FAMILY UNIT MEMBERS 1,116 FAMILY MEMBERS PAYING HALF DUES 595